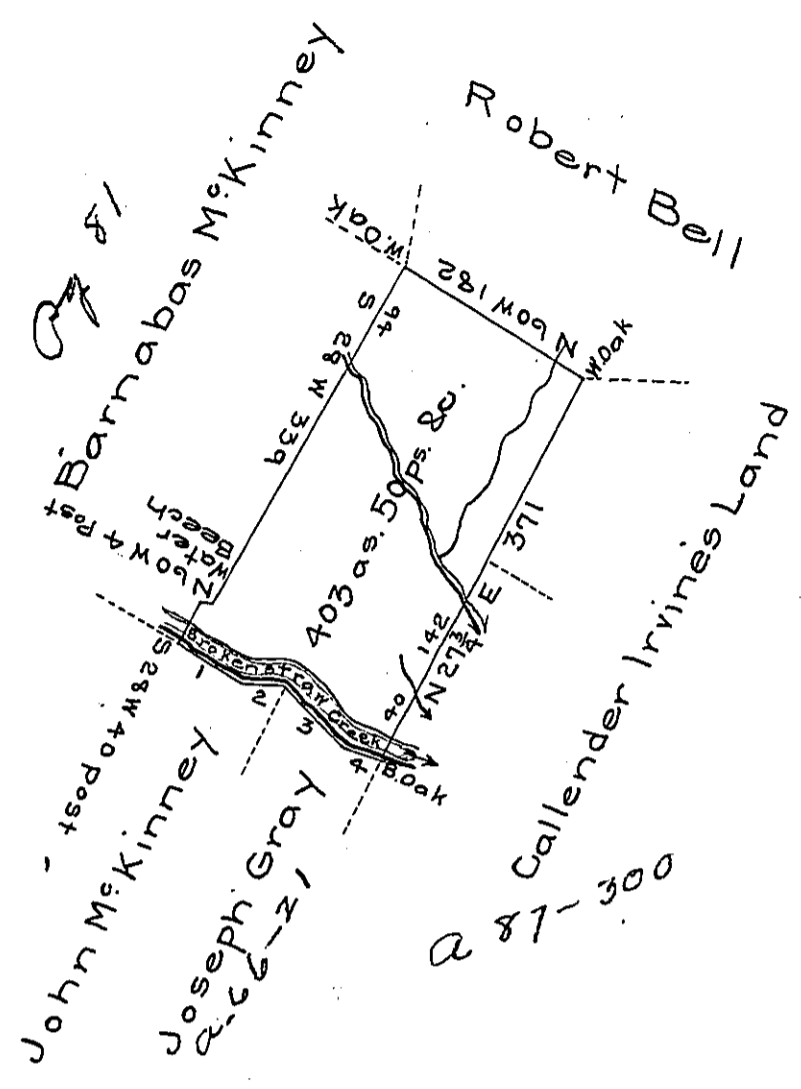


Courses & distances  
down creek from post

- Nº 1. S 63 E 57 Sugar
- 2. S 81 E 30.5 Post
- 3. S 50 E 75
- 4. S 74 E 29 B. Oak



Draft of a tract of land situate in Brokenstraw town-  
 ship, Warren county, West of the Allegheny river, on Brok-  
 enstraw creek. Surveyed 28<sup>th</sup> June 1820 for Barnabas M<sup>c</sup>  
 Kinney on improvement and settlement.

Jacob Spangler Esq<sup>r</sup> }  
 Surveyor General of Pa. }

John Irwin D.S.

IN TESTIMONY that the above is a copy of the original remaining on file in  
 the Department of Internal Affairs of Pennsylvania, made  
 conformably to an Act of Assembly approved the 16th day of  
 February, 1833, I have hereunto set my Hand and caused  
 the Seal of said Department to be affixed at Harrisburg,  
 this twenty-ninth day of March 1906

*Luca P. Brown*  
 Secretary of Internal Affairs